



PARK FARM

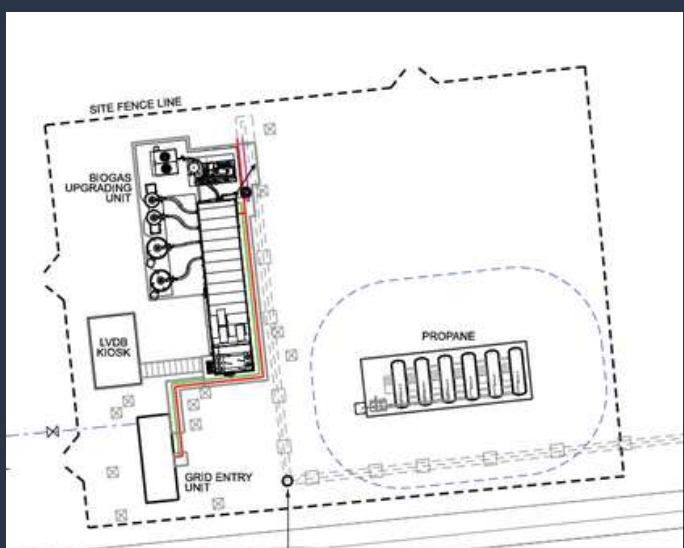
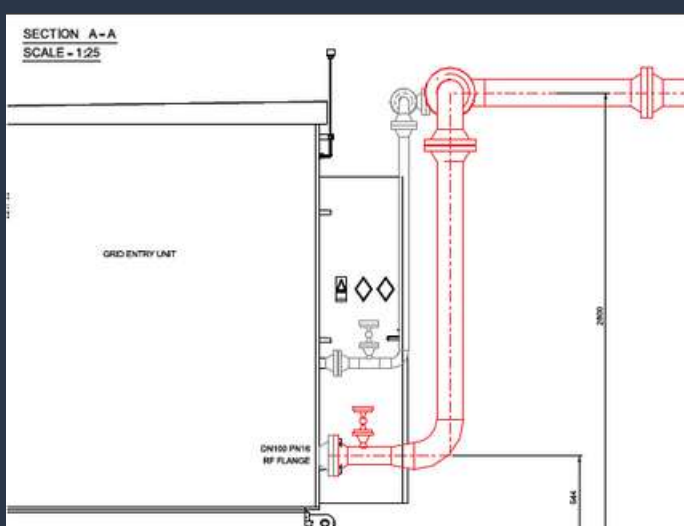
CLIENT: AIR LIQUIDE
G2G: DECEMBER 2019

PROJECT OVERVIEW

Built parallel to Enrich4's new food waste AD plant, the Air Liquide Park Farm site injects 600scmh of biomethane into the 2bar NGN MP network via a 450m 180mm PE80 pipeline. CSL were responsible for the overall design, management and delivery of the project on behalf of Air Liquide who free issued the BUU and GEU. CSL acted as key liaison between Air Liquide, NGN and Enrich4.

KEY CHALLENGES

An extremely aggressive project programme was the key challenge on this project with CSL contributing to constructing not only a new BtG plant but also the AD plant within four months. CSL managed efficient collaboration between Stortec, Enrich4, NGN and Air Liquide's design authority to deliver the quickest functioning AD and BtG build in the UK.



CSL DESIGN SCOPE

- Integration of Air Liquide membrane BUU with Orbital GEU
- Mechanical pipework & condensate system installation
- Provided air compressors LVDB, and all electrical and communications cabling.
- Export pipeline to MP main

CSL PM SCOPE

- Principal Designer and Principal Contractor under CDM
- Programme Management
- NGN tracker management inc GL5/G17
- HAZOP and DSEAR
- G2G commissioning management